



WASHING

SOLUTIONS

VERTICAL WASHING MACHINES

OT SERIES

CT SERIES

CTS SERIES

WASHING AND DRYING GLASS SHEETS

WASHING SOLUTIONS

Lattuada washing machines can be integrated with different machines, such as vertical grinding, drilling and milling lines as well as CNC machines.

They differ in terms of the useful washing height, number of brushes and total loadable weights. The machine body and all parts exposed to contact with water are made of stainless steel or stainless material.



performing

high washing and drying capacity

Lattuada design criteria increasingly focused on each and every need as well as construction and structural robustness offer high washing and drying quality washing machines, even at high speeds and on any type of glass.



productive

smart technology

Suitable for high production loads, our washing machines can run 24/7 non-stop.



reliable

little maintenance required

All points requiring maintenance are easily accessible and the maintenance operations to be carried out are simple and quick to perform.



flexible

customised configurations

All Lattuada washing machine models are highly customisable and can be integrated with different machines, such as vertical grinding, drilling and milling lines as well as CNC machines.



smart

simplicity of use

Easily accessible sophisticated technology; this is our approach when it comes to building machines.



excellent

top performance

Thanks to our know-how developed and perfected in 40 years, we - at Lattuada - design and manufacture machines that offer utmost washing and drying final quality.



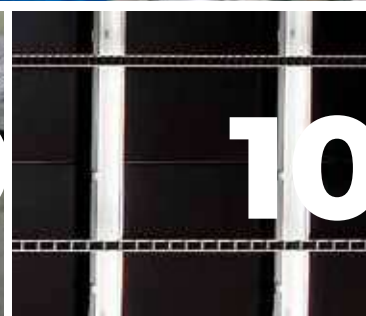
VERTICAL WASHING MACHINES

TECHNICAL DETAILS

Attention to details generates supreme quality products. Highly reliable state-of-the-art machines, in terms of precision, are our company's strong points.



- 1 **Rollers for glass sheets** transport (special version for heavy loads).
- 2 Conveyors with belts **for washing shaped glasses**.
- 3 Brushes available for **Low-E glass** too.
- 4 Glass **anti-chute sensor and pedal**.
- 5 **Brush motors** positioned at the top part of the washing machine.
- 6 Option to **position in line** with our edging and bevelling machines.
- 7 Soundproofed **high-pressure fan**.
- 8 **Components certified** in compliance with the UL-CSA standards.
- 9 **Hot water** for pre-washing, first washing or rinsing section.
- 10 Black panel with **inspection lights**.
- 11 High **soundproof** level.



OT SERIES

OPEN TOP VERTICAL WASHING MACHINES

When stored, glasses are usually exposed to the risk of being scratched due to the dirt that deposits on them during processing.

This problem can be solved by using an OT series washing machine, designed for washing and drying sheets, and which can be integrated with different machines, such as vertical grinding, drilling and milling lines as well as CNC machines.



3 - 15 / 20 / 25 mm
1/8 - 0.6 / 3/4 / 1 "



350xH100 mm
13.8xH3.9 "



200 / 300 / 500 kg
441 / 661 / 1,102 lbs



2 / 4 / 6




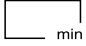
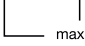





OT 1600 | OT 2000 SERIES

Open top vertical
washing machines



OT 1600 SERIES

Open top vertical washing machines

									
OT 1600/200/2s	eu	0,5 - 5 m/min	350xH100 mm*	1.600 mm	3 - 15 mm opt. 3 - 19 mm	7**	5.970x2.000 xH2.520 mm	200 Kg	2
	us	19.7 - 197 "/min	13.8xH3.9 "**	63 "	1/8 - 0.6 " opt. 1/8 - 0.7 "		235x78.7 xH99.2 "	441 lbs	
OT 1600/200/4s	eu	0,5 - 5 m/min	350xH100 mm*	1.600 mm	3 - 15 mm opt. 3 - 19 mm	7**	6.240x2.000 xH2.520 mm	200 Kg	4
	us	19.7 - 197 "/min	13.8xH3.9 "**	63 "	1/8 - 0.6 " opt. 1/8 - 0.7 "		245.6x78.7 xH99.2 "	441 lbs	
OT 1600/300/4s	eu	0,5 - 5 m/min	350xH100 mm*	1.600 mm	3 - 20 mm opt. 3 - 30 mm	9**	6.240x2.000 xH2.520 mm	300 Kg	4
	us	19.7 - 197 "/min	13.8xH3.9 "**	63 "	1/8 - 3/4 " opt. 1/8 - 1.2 "		245.6x78.7 xH99.2 "	661 lbs	
OT 1600/300/6s	eu	0,5 - 5 m/min	350xH100 mm*	1.600 mm	3 - 20 mm opt. 3 - 30 mm	9**	6.720x2.000 xH2.520 mm	300 Kg	6
	us	19.7 - 197 "/min	13.8xH3.9 "**	63 "	1/8 - 3/4 " opt. 1/8 - 1.2 "		264.5x78.7 xH99.2 "	661 lbs	
OT 1600/500/4s	eu	0,5 - 5 m/min	350xH100 mm*	1.600 mm	3 - 25 mm opt. 3 - 40 mm	9**	6.710x2.000 xH2.520 mm	500 Kg	4
	us	19.7 - 197 "/min	13.8xH3.9 "**	63 "	1/8 - 1 " opt. 1/8 - 1.6 "		264.1x78.7 xH99.2 "	1,102 lbs	
OT 1600/500/6s	eu	0,5 - 5 m/min	350xH100 mm*	1.600 mm	3 - 25 mm opt. 3 - 40 mm	9**	7.210x2.200 xH2.520 mm	500 Kg	6
	us	19.7 - 197 "/min	13.8xH3.9 "**	63 "	1/8 - 1 " opt. 1/8 - 1.6 "		283.8x86.6 xH99.2 "	1,102 lbs	

LEGEND



speed



minimum glass size



maximum glass size



workable glass thickness



installed power



dimensions



max glass load (on the conveyor)



brushes

OT 2000 SERIES

Open top vertical washing machines



Model	Region	Speed	Drum Size	Height	Brush Size	Power (Kw)	Dimensions (mm)	Weight	Capacity
OT 2000/300/4S	eu	0,5 - 5 m/min	350xH100 mm*	2.000 mm	3 - 20 mm opt. 3 - 30 mm	g**	6.240x2.000 xH2.920 mm	300 Kg	4
	us	19.7 - 197 "/min	13.8xH3.9 "**	78.7 "	1/8 - 3/4 " opt. 1/8 - 1.2 "		245.6x78.7 xH114.9 "	661 lbs	
OT 2000/300/6S	eu	0,5 - 5 m/min	350xH100 mm*	2.000 mm	3 - 20 mm opt. 3 - 30 mm	g**	6.720x2.000 xH2.920 mm	300 Kg	6
	us	19.7 - 197 "/min	13.8xH3.9 "**	78.7 "	1/8 - 3/4 " opt. 1/8 - 1.2 "		264.5x78.7 xH114.9 "	661 lbs	
OT 2000/500/4S	eu	0,5 - 5 m/min	350xH100 mm*	2.000 mm	3 - 25 mm opt. 3 - 40 mm	14**	6.720x2.000 xH2.920 mm	500 Kg	4
	us	19.7 - 197 "/min	13.8xH3.9 "**	78.7 "	1/8 - 1 " opt. 1/8 - 1.6 "		264.5x78.7 xH114.9 "	1,102 lbs	
OT 2000/500/6S	eu	0,5 - 5 m/min	350xH100 mm*	2.000 mm	3 - 25 mm opt. 3 - 40 mm	14**	7.210x2.200 xH2.920 mm	500 Kg	6
	us	19.7 - 197 "/min	13.8xH3.9 "**	78.7 "	1/8 - 1 " opt. 1/8 - 1.6 "		283.8x86.6 xH114.9 "	1,102 lbs	

* others on request
** standard (may vary depending on options potentially included)

CT SERIES

VERTICAL WASHING MACHINES CLOSED ON TOP

When stored, glasses are usually exposed to the risk of being scratched due to the dirt that deposits on them during processing.

This problem can be solved by using a CT series washing machine, designed for washing and drying sheets, and which can be integrated with different machines, such as vertical grinding, drilling and milling lines as well as CNC machines.



3 - 25 mm
1/8 - 1 "



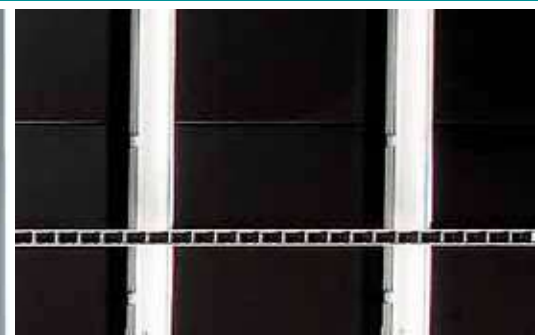
400xH100
15.7x3.9 "



500 kg
1,102 lbs

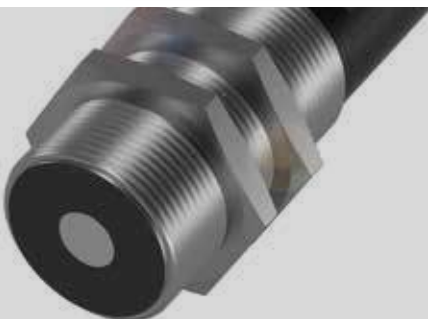


4 / 6



CT 2600 | CT 3300 SERIES

Vertical washing machines
closed on top



CT 2600 SERIES

Vertical washing machines closed on top



CT 2600/500/4s	eu	0,5 - 5 m/min	400xH100 mm*	2.600 mm	3 - 25 mm opt. 3 - 40 mm	19**	7.950x2.570 xH3.590 mm	500 Kg opt. 800 Kg	4
	us	19.7 - 197 "/min	15.7xH3.9 "**	102.3 "	1/8 - 1 " opt. 1/8 - 1.6 "		321.9x101.1 xH141.3 "	1,102 lbs opt. 1,764 lbs	

CT 2600/500/6s	eu	0,5 - 5 m/min	400xH100 mm*	2.600 mm	3 - 25 mm opt. 3 - 40 mm	23**	8.670x2.570 xH3.590 mm	500 Kg opt. 800 Kg	6
	us	19.7 - 197 "/min	15.7xH3.9 "**	102.3 "	1/8 - 1 " opt. 1/8 - 1.6 "		341.3x101.1 xH141.3 "	1,102 lbs opt. 1,764 lbs	

LEGEND



speed



minimum
glass size



maximum
glass size



workable glass
thickness



installed
power



dimensions



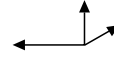
max glass load
(on the conveyor)



brushes

SERIE CT 3300

Vertical washing machines closed on top



CT 3300/500/4S	eu	0,5 - 5 m/min	400xH100 mm*	3.300 mm	3 - 25 mm opt. 3 - 40 mm	23**	9.440x2.570 xH4.290 mm	500 Kg opt. 800 Kg	4
	us	19.7 - 197 "/min	15.7xH3.9 "**	129.9 "	1/8 - 1 " opt. 1/8 - 1.6 "		371.6x101.1 xH168.8 "	1,102 lbs opt. 1,764 lbs	

CT 3300/500/6S	eu	0,5 - 5 m/min	400xH100 mm*	3.300 mm	3 - 25 mm opt. 3 - 40 mm	23**	10.160x2.570 xH4.290 mm	500 Kg opt. 800 Kg	6
	us	19.7 - 197 "/min	15.7xH3.9 "**	129.9 "	1/8 - 1 " opt. 1/8 - 1.6 "		400x101.1 xH168.8 "	1,102 lbs opt. 1,764 lbs	

* others on request
** standard (may vary depending on options potentially included)

CTS

SERIES

VERTICAL WASHING MACHINES CLOSED ON TOP

The Lattuada CTS series models are washing machines designed for glassmakers handling **major volumes of large sheets and high thicknesses.**



3 - 60/80 mm
1/8 - 2.3/3.1 "



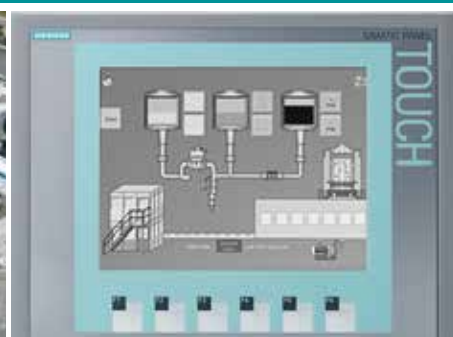
400xH100
15.7x3.9 "



800/1,500 kg
1,764/3,306 lbs



4/6




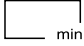
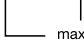
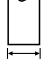




CTS 2600 | CTS 3300 SERIES

Vertical washing machines
closed on top




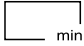
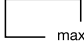


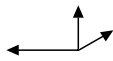


CTS 2600 SERIES

Vertical washing machines **closed on top**

									
CTS 2600 800/4s	eu	0,5 - 5 m/min	400xH100 mm*	2.600 mm	3 - 60 mm	23**	7.950x2.570 xH3.590 mm	800 Kg opt. 1.000 Kg	4
	us	19.7 - 197 "/min	15.7xH3.9 "**	102.3 "	1/8 - 2.3 "		321.9x101.1 xH141.3 "	1,764 lbs opt. 2,204 lbs	
CTS 2600 800/6s	eu	0,5 - 5 m/min	400xH100 mm*	2.600 mm	3 - 60 mm	23**	8.670x2.570 xH3.590 mm	800 Kg opt. 1.000 Kg	6
	us	19.7 - 197 "/min	15.7xH3.9 "**	102.3 "	1/8 - 2.3 "		341.3x101.1 xH141.3 "	1,764 lbs opt. 2,204 lbs	
CTS 2600 1500/4s	eu	0,5 - 5 m/min	400xH100 mm*	2.600 mm	3 - 80 mm	23**	8.780x2.585 xH3.590 mm	1.500 Kg opt. 2.000 Kg	4
	us	19.7 - 197 "/min	15.7xH3.9 "**	102.3 "	1/8 - 3.1 "		345.6x101.7 xH141.3 "	3,306 lbs opt. 4,409 lbs	
CTS 2600 1500/6s	eu	0,5 - 5 m/min	400xH100 mm*	2.600 mm	3 - 80 mm	23**	9.120x3.590 xH3.590 mm	1.500 Kg opt. 2.000 Kg	6
	us	19.7 - 197 "/min	15.7xH3.9 "**	102.3 "	1/8 - 3.1 "		359x101.7 xH141.3 "	3,306 lbs opt. 4,409 lbs	

CTS 3300 SERIES

Vertical washing machines **closed on top**

									
CTS 3300 800/4s	eu	0,5 - 5 m/min	400xH100 mm*	3.300 mm	3 - 60 mm	23**	9.440x2.570 xH4.290 mm	800 Kg opt. 1.000 Kg	4
	us	19.7 - 197 "/min	15.7xH3.9 "**	129.9 "	1/8 - 2.3 "		371.6x101.1 xH168.8 "	1,764 lbs opt. 2,204 lbs	
CTS 3300 800/6s	eu	0,5 - 5 m/min	400xH100 mm*	3.300 mm	3 - 60 mm	23**	10.160x2.570 xH4.290 mm	800 Kg opt. 1.000 Kg	6
	us	19.7 - 197 "/min	15.7xH3.9 "**	129.9 "	1/8 - 2.3 "		400x101.1 xH168.8 "	1,764 lbs opt. 2,204 lbs	
CTS 3300 1500/4s	eu	0,5 - 5 m/min	400xH100 mm*	3.300 mm	3 - 80 mm	23**	10.270x2.585 xH4.290 mm	1.500 Kg opt. 2.000 Kg	4
	us	19.7 - 197 "/min	15.7xH3.9 "**	129.9 "	1/8 - 3.1 "		404.3x101.7 xH168.8 "	3,306 lbs opt. 4,409 lbs	
CTS 3300 1500/6s	eu	0,5 - 5 m/min	400xH100 mm*	3.300 mm	3 - 80 mm	23**	10.610x2.585 xH4.290 mm	1.500 Kg opt. 2.000 Kg	6
	us	19.7 - 197 "/min	15.7xH3.9 "**	129.9 "	1/8 - 3.1 "		417.7x101.7 xH168.8 "	3,306 lbs opt. 4,409 lbs	

* others on request ** standard (may vary depending on options potentially included)

LEGEND



speed



minimum
glass size



minimum
glass size



workable glass
thickness



installed
power



dimensions



max glass load
(on the conveyor)

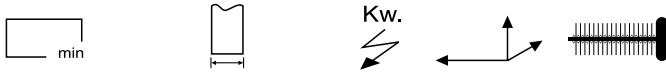


brushes

ACCESSORIES

VERTICAL WASHING MACHINES

The washing machine applied to **the edging machines and bevelling machines** outlet conveyor allows the complete cleaning and drying of the processed edges of the glass sheets.



OT 300	eu	300x300 mm*	the same of the machine on which it is fitted on	2 **	550x600 xH770 mm	2
	us	11.8x11.8 **			21.6x23.6 xH30.3 "	
* others on request						
** standard (may vary depending on options potentially included)						

PANEL

TOUCH SCREEN OPERATOR

Panel for the control and management of all work steps

